

OCTOBER 16, 1987

WIND DIRECTION	FORCE	BAROMETER	TEMPERATURE	REMARKS
Sly	7-8	28.66	66/62	
Sly	10-12	28.30	57/54	

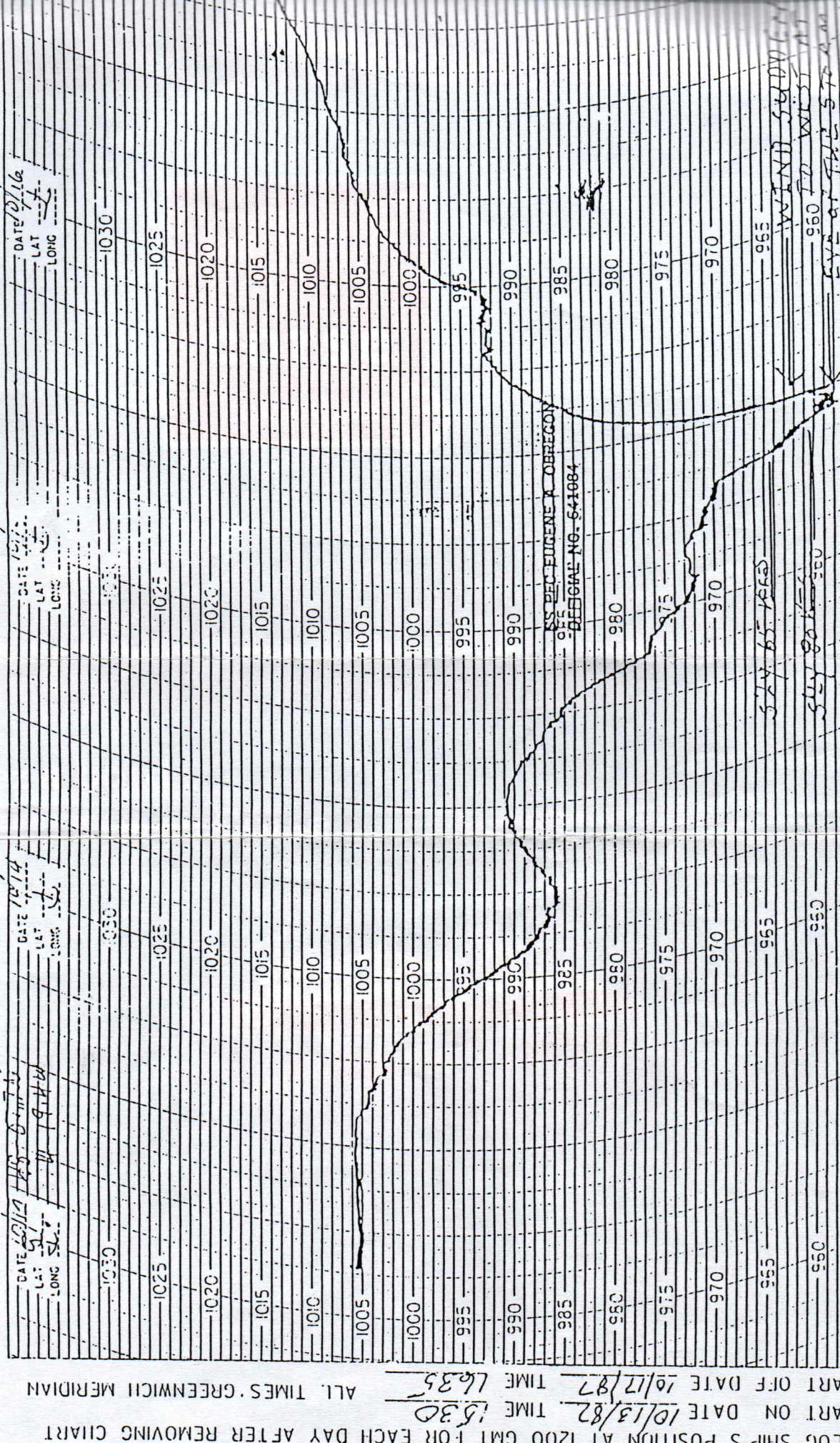
VESSEL MANEUVERING TO HOLD ANCHORAGE POSITION IN VIOLENT STORM FORCE WINDS. B. WILLIAMS 3/M

OCTOBER 16, 1987

0054	W	10-12	28.32	
0300	W	8	29.10	

MANEUVERING IN HEAVY HURRICANE FORCE WINDS TO HOLD ANCHORAGE. WIND FORCE DECREASE TO FORCE 8. A. VALLARDES 2/M

03 05 09 12 15 18 21 00 03 06 09 12 15 18 21 00 03 06 09 12 15 18 21 00



LOG SHIP'S POSITION AT 1200 GMT FOR EACH DAY AFTER REMOVING CHART  
 HART ON DATE 10/13/87 TIME 1530  
 HART OFF DATE 10/12/87 TIME 1635  
 ALL TIMES GREENWICH MERIDIAN

SHIP'S ROUTE FROM AT Douaniers, France  
 NATIONAL WEATHER SERVICE  
 BAROGRAM